



Tests Edit Test

 Tests  Groups  Links **Primary 4 - Term 2 (SA1) Science (School T)**  Duplicate Print Delete Assign Test**Test Introduction**[+ Add Introduction](#)**62 Questions** (70 Points)Question Bank: 19,950 Questions 

Test Questions

1 Test Assignment

Question 1

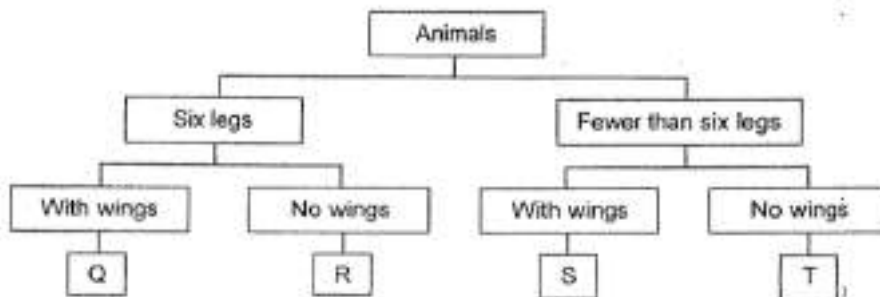
Primary 4 Science » Primary 4 Science (Term 2)

2 pts

Booklet A (28 x 2 marks)

For each question from 1 to 28, four options are given. One of them is the correct answer.

Study the flowchart below carefully. Q, R, S and T are animals.



Observe the animal shown below.



Which letter, Q, R, S or T, represents the animal above?

- A) Q
- B) R
- ✓ C) S
- D) T

Question Type: Multiple Choice
Randomize Answers: No
Date Added: Wed 16th Sep 2020
Last Modified: Mon 21st Sep 2020
QID#: 23,697,437

[Answers](#) | [Edit](#) | [Duplicate](#) | [Used In](#) | [Reorder](#)

[Remove From Test](#)

Question 2

Primary 4 Science » Primary 4 Science (Term 2)

2 pts

Ida placed some mealworms in an air-tight container as shown below



She observed that the mealworms died after a few weeks. Based on the above experiment, what can she conclude about living things.

- A) Living things can reproduce
- ✓ B) Living things need air to stay alive
- C) Living things can respond to changes
- D) Living things can live without air, food and water

Question Type: Multiple Choice
Randomize Answers: No
Date Added: Wed 16th Sep 2020
Last Modified: N/A
QID#: 23,697,453

[Answers](#) | [Edit](#) | [Duplicate](#) | [Used In](#) | [Reorder](#)

[Remove From Test](#)

Question 3

Primary 4 Science » Primary 4 Science (Term 2)

2 pts

Which of the following is a common characteristic of fern and fungi?

- ✓ A) They reproduce by spores
- B) They trap sunlight to make food
- C) They feed on dead plants and animals
- D) They only need water and food to survive

Question Type: Multiple Choice
Randomize Answers: No
Date Added: Wed 16th Sep 2020
Last Modified: N/A
QID#: 23,697,465

[Answers](#) |
 [Edit](#) |
 [Duplicate](#) |
 [Used In](#) |
 [Reorder](#)

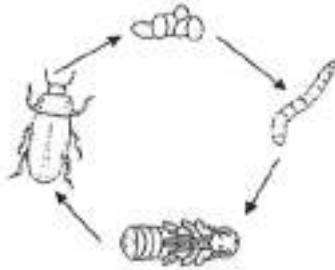
[Remove From Test](#)

Question 4

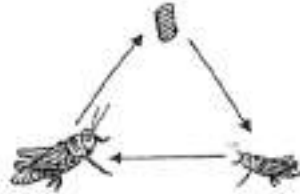
Primary 4 Science » Primary 4 Science (Term 2)

2 pts

Study the life cycles of Insects A and B below.



Life cycle of Insect A



Life cycle of Insect B

Which of the following is true of the life cycles shown above?

- A) The young of Insect A and B do not feed
- B) Insect A has an egg stage while Insect B does not have an egg stage
- ✓ C) Insect A has a larval stage while Insect B does not have a larval stage
- D) The young of Insect B does not look like its adult but the young of Insect A does

Question Type: Multiple Choice
Randomize Answers: No
Date Added: Wed 16th Sep 2020
Last Modified: N/A
QID#: 23,697,480

[Answers](#) |
 [Edit](#) |
 [Duplicate](#) |
 [Used In](#) |
 [Reorder](#)

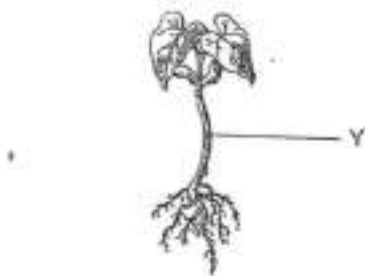
[Remove From Test](#)

Question 5

Primary 4 Science » Primary 4 Science (Term 2)

2 pts

Megan planted a seed which grew into a young plant as shown below.



Which of the following statements is true about the main function of the part labelled Y?

- A) It grows away from light
- B) It holds the plant firmly to the soil

- ✓ C) It supports the plant and keeps it upright
- D) It absorbs water and mineral salt from the soil

Question Type: Multiple Choice
Randomize Answers: No
Date Added: Wed 16th Sep 2020
Last Modified: N/A
QID#: 23,697,497

[↶ Answers](#) | [✎ Edit](#) | [📄 Duplicate](#) | [📌 Used In](#) | [⬇ Reorder](#)

[Remove From Test](#)

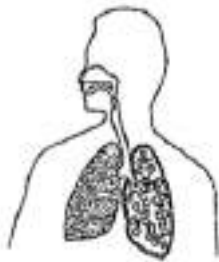
Question 6

Primary 4 Science » Primary 4 Science (Term 2)

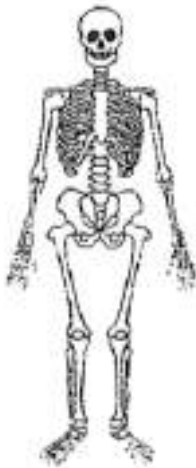
2 pts

Which of the following systems takes in air in the human body?

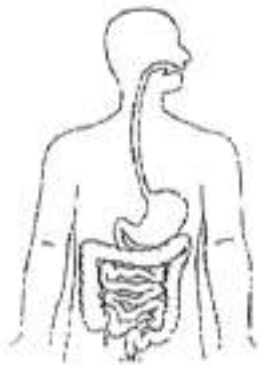
✓ A)



B)



C)



D)



Question Type: Multiple Choice
Randomize Answers: No
Date Added: Wed 16th Sep 2020
Last Modified: N/A
QID#: 23,697,518

[Answers](#) | [Edit](#) | [Duplicate](#) | [Used In](#) | [Reorder](#)

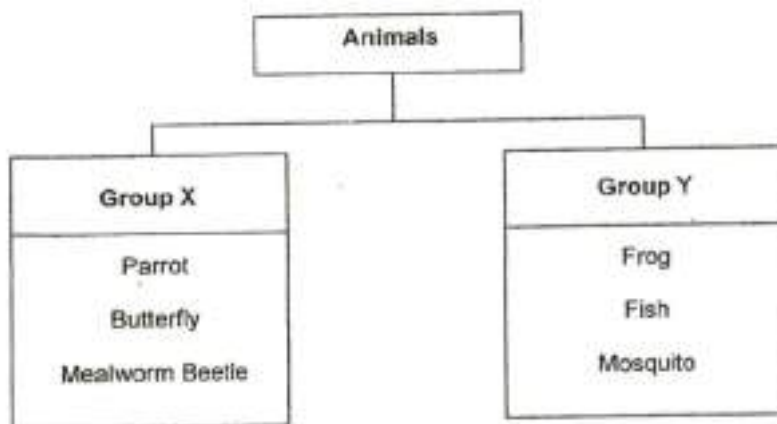
[Remove From Test](#)

Question 7

Primary 4 Science » Primary 4 Science (Term 2)

2 pts

Study the classification chart below.



Which of the following best describe Groups X and Y?

- A)

Group X	Group Y
Adult stage lives on land	Adult stage lives in water
- B)

Life cycle has a pupa stage	Life cycle does not have a pupa stage
-----------------------------	---------------------------------------
- C)

Has a 4-stage life cycle	Has a 3-stage life cycle
--------------------------	--------------------------

✓ D)

Eggs are not laid in water	Eggs are laid in water
----------------------------	------------------------

Question Type: Multiple Choice
Randomize Answers: No
Date Added: Wed 16th Sep 2020
Last Modified: N/A
QID#: 23,697,561

[Answers](#) | [Edit](#) | [Duplicate](#) | [Used In](#) | [Reorder](#)

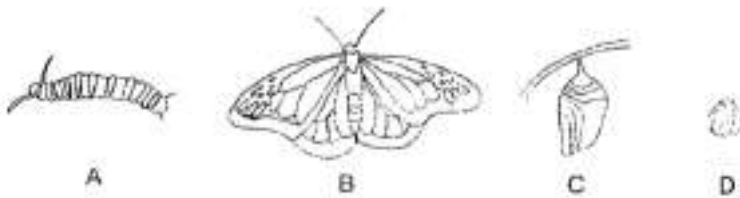
[Remove From Test](#)

Question 8

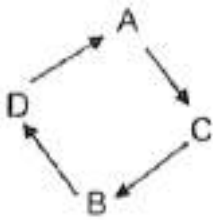
Primary 4 Science » Primary 4 Science (Term 2)

2 pts

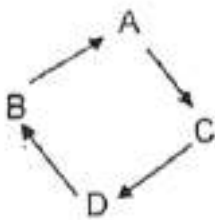
Which of the following arrangement represents the 4 stages of the butterfly in its life cycle?



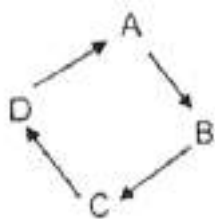
✓ A)



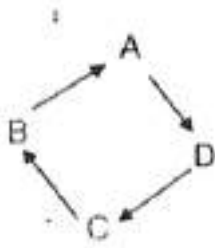
B)



C)



D)



Question Type: Multiple Choice
Randomize Answers: No
Date Added: Wed 16th Sep 2020
Last Modified: N/A
QID#: 23,697,579

[Answers](#) | [Edit](#) | [Duplicate](#) | [Used In](#) | [Reorder](#)

[Remove From Test](#)

Question 9

Primary 4 Science » Primary 4 Science (Term 2)

2 pts

A butterfly usually lays its eggs on leaves. How does this help in the survival of its young?

- A) Its larva can obtain more air
- B) It pupa has space to grow larger
- ✓ C) Its larva will have a ready food source
- D) When hatched, the adult can fly off easily

Question Type: Multiple Choice
Randomize Answers: No
Date Added: Wed 16th Sep 2020
Last Modified: N/A
QID#: 23,697,594

[Answers](#) | [Edit](#) | [Duplicate](#) | [Used In](#) | [Reorder](#)

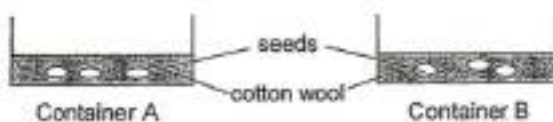
[Remove From Test](#)

Question 10

Primary 4 Science » Primary 4 Science (Term 2)

2 pts

Hui Hui was given similar seeds to grow at home. She placed the seeds in two containers, A and B. After two weeks, only seeds in Container A germinated.



Which of the following was likely the changed variable for Hui Hui's experiment?

- A)

Container A	Container B
Placed in the garden	Placed in a dark room
- B)

No water given daily	Water given daily
----------------------	-------------------

- C)

No air	Has air
--------	---------
- ✓ D)

Placed in the cupboard	Placed in a refrigerator
------------------------	--------------------------

Question Type: Multiple Choice
Randomize Answers: No
Date Added: Wed 16th Sep 2020
Last Modified: N/A
QID#: 23,697,620

[Answers](#) | [Edit](#) | [Duplicate](#) | [Used In](#) | [Reorder](#)

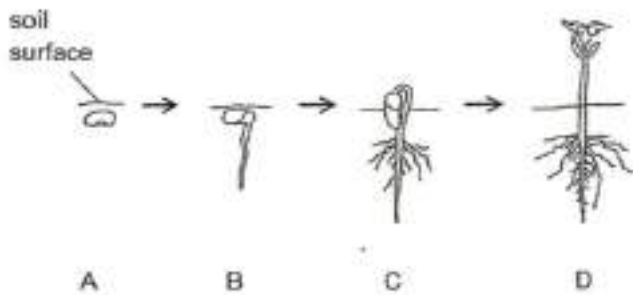
[Remove From Test](#)

Question 11

Primary 4 Science » Primary 4 Science (Term 2)

2 pts

The diagram below shows the stages of germination (A, B, C and D) of Plant Y.



Which stage, A, B, C or D, shows the start of germination?

- A) A
- ✓ B) B
- C) C
- D) D

Question Type: Multiple Choice
Randomize Answers: No
Date Added: Wed 16th Sep 2020
Last Modified: N/A
QID#: 23,697,625

[Answers](#) | [Edit](#) | [Duplicate](#) | [Used In](#) | [Reorder](#)

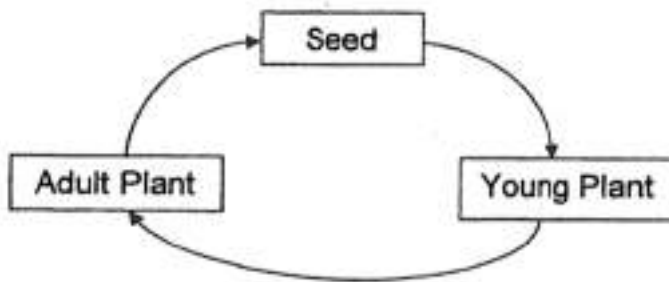
[Remove From Test](#)

Question 12

Primary 4 Science » Primary 4 Science (Term 2)

2 pts

Study the life cycle shown below.



Which of the following living things has the above life cycle?

- A) Moss
- ✓ B) Papaya Tree
- C) Bird's Nest Fern
- D) Bracket Mushroom

Question Type: Multiple Choice
 Randomize Answers: No
 Date Added: Wed 16th Sep 2020
 Last Modified: N/A
 QID#: 23,697,636

[Answers](#) | [Edit](#) | [Duplicate](#) | [Used In](#) | [Reorder](#)

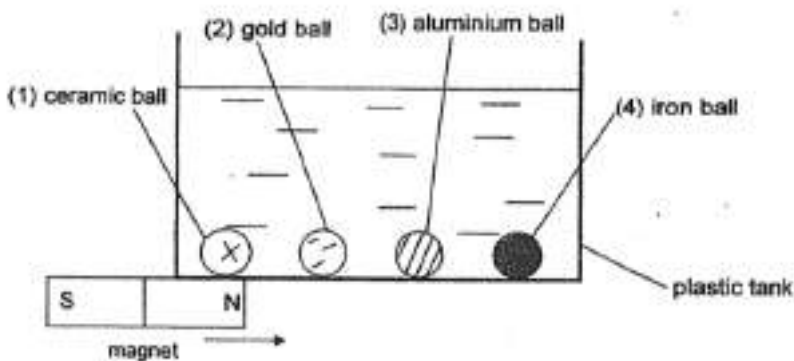
[Remove From Test](#)

Question 13

Primary 4 Science » Primary 4 Science (Term 2)

2 pts

In a plastic tank, there are 4 balls of different materials. Matthew takes a magnet and moves it under the tank in the direction as shown below. Which of the following balls will move with the magnet?



- A) 1
- B) 2
- C) 3
- ✓ D) 4

Question Type: Multiple Choice
Randomize Answers: No
Date Added: Wed 16th Sep 2020
Last Modified: N/A
QID#: 23,697,644

[Answers](#) | [Edit](#) | [Duplicate](#) | [Used In](#) | [Reorder](#)

[Remove From Test](#)

Question 14

Primary 4 Science » Primary 4 Science (Term 2)

2 pts

- Mr Lee wanted to select a material for making the outer-casing of an air-conditioner remote controller



The following table shows the properties of four materials.

Material	Can it break easily?	Is it light?
A	No	Yes
B	Yes	Yes
C	No	No
D	Yes	No

Which of the following materials, A, B, C and D, is most suitable for Mr Lee to make the outer casing of the air-conditioner remote control?

- ✓ A) A
 B) B
 C) C
 D) D

Question Type: Multiple Choice
Randomize Answers: No
Date Added: Wed 16th Sep 2020
Last Modified: N/A
QID#: 23,697,651

[Answers](#) | [Edit](#) | [Duplicate](#) | [Used In](#) | [Reorder](#)

[Remove From Test](#)

Question 15

Primary 4 Science » Primary 4 Science (Term 2)

2 pts

Muthu carried out an experiment with a bar magnet and 4 other bars, A, B, C and D, of different materials. The ends of the objects are labelled X and Y.



He brought the north-seeking pole of the bar magnet near both ends of A, B, C and D and recorded his observations in the table below.

Bar	Reaction to the north-seeking pole of the magnet	
	X	Y
A	attract	attract
B	repel	attract
C	no reaction	no reaction
D	attract	repel

Which of the following statements is correct?

- A) Only A is a magnet
- B) B, C and D are magnets
- C) Only A is made of magnetic material
- ✓ D) Only A, B and D are made of magnetic materials

Question Type: Multiple Choice
Randomize Answers: No
Date Added: Wed 16th Sep 2020
Last Modified: N/A
QID#: 23,697,669

[Answers](#) | [Edit](#) | [Duplicate](#) | [Used In](#) | [Reorder](#)

[Remove From Test](#)

Question 16

Primary 4 Science » Primary 4 Science (Term 2)

2 pts

Which of the following is not matter?

- A) air
- B) salt
- ✓ C) light
- D) water

Question Type: Multiple Choice
Randomize Answers: No
Date Added: Wed 16th Sep 2020
Last Modified: N/A
QID#: 23,697,673

[Answers](#) | [Edit](#) | [Duplicate](#) | [Used In](#) | [Reorder](#)

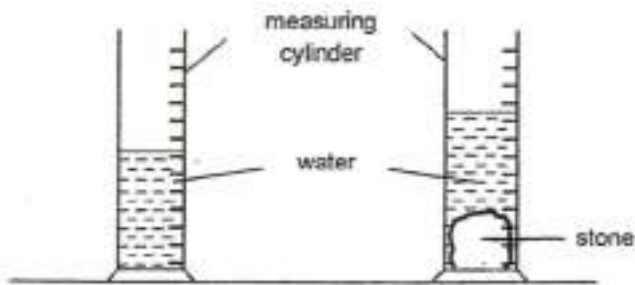
[Remove From Test](#)

Question 17

Primary 4 Science » Primary 4 Science (Term 2)

2 pts

Kevin lowered a stone into a measuring cylinder containing some water. He observed a change in water level as shown in the diagram below.



Which of the following explains why the water level changed?

- A) The water has mass
- B) The water is not matter
- ✓ C) The stone occupies space
- D) The volume of water increased

Question Type: Multiple Choice
 Randomize Answers: No
 Date Added: Wed 16th Sep 2020
 Last Modified: N/A
 QID#: 23,697,687

[Answers](#) |
 [Edit](#) |
 [Duplicate](#) |
 [Used In](#) |
 [Reorder](#)

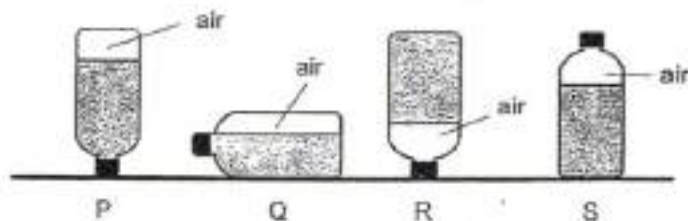
[Remove From Test](#)

Question 18

Primary 4 Science » Primary 4 Science (Term 2)

2 pts

Four bottles, P, Q, R and S, contained water. One of them had been put into a freezer.



Which of the bottles had definitely been placed in a freezer?

- A) P
- B) Q
- ✓ C) R

D) S

Question Type: Multiple Choice
Randomize Answers: No
Date Added: Wed 16th Sep 2020
Last Modified: N/A
QID#: 23,697,695

[Answers](#) | [Edit](#) | [Duplicate](#) | [Used In](#) | [Reorder](#)

[Remove From Test](#)

Question 19

Primary 4 Science » Primary 4 Science (Term 2)

2 pts

A clown inflated a long yellow balloon and twisted it into the shape of a dog. What properties of air in the balloon did he change?

- A: The shape of the air
- B: The mass of the air
- C: The colour of the air
- D: The volume of the air

- A) A and B only
- ✓ B) A and D only
- C) B and C only
- D) C and D only

Question Type: Multiple Choice
Randomize Answers: No
Date Added: Wed 16th Sep 2020
Last Modified: N/A
QID#: 23,697,719

[Answers](#) | [Edit](#) | [Duplicate](#) | [Used In](#) | [Reorder](#)

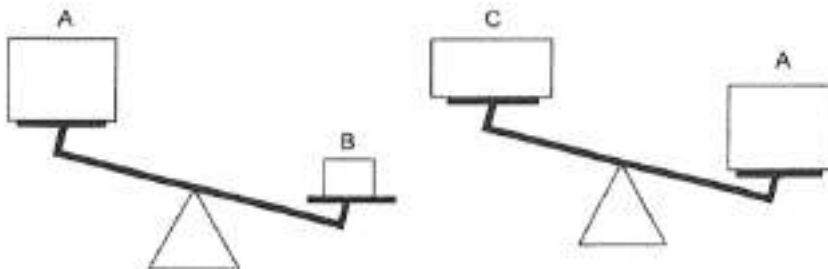
[Remove From Test](#)

Question 20

Primary 4 Science » Primary 4 Science (Term 2)

2 pts

Three objects, A, B and C, are placed on a balance.



Which of the following statements is correct?

- A) A is the heaviest
- ✓ B) B is the heaviest
- C) A is heavier than B
- D) C is heavier than B

Question Type: Multiple Choice
Randomize Answers: No
Date Added: Wed 16th Sep 2020
Last Modified: N/A
QID#: 23,697,734

[Answers](#) | [Edit](#) | [Duplicate](#) | [Used In](#) | [Reorder](#)

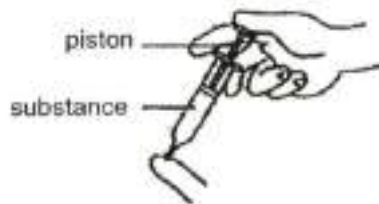
[Remove From Test](#)

Question 21

Primary 4 Science » Primary 4 Science (Term 2)

2 pts

Two identical syringes are filled fully with unknown substances, E and F. Siti used her finger to cover each syringe as shown in the diagram below. The piston is pushed down and the distance moved by the piston is recorded by Siti in the table below.



Distance moved by piston (cm)	
Syringe with E	Syringe with F
2	0

Which of the following are the substances, E and F?

- A)

Substance E	Substance F
Slime	Water
- B)

Water	Slime
-------	-------
- ✓ C)

Air	Water
-----	-------
- D)

Slime	Air
-------	-----

Question Type: Multiple Choice
Randomize Answers: No
Date Added: Wed 16th Sep 2020
Last Modified: N/A
QID#: 23,697,754

[Answers](#) | [Edit](#) | [Duplicate](#) | [Used In](#) | [Reorder](#)

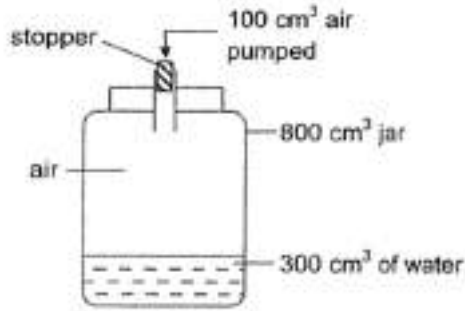
[Remove From Test](#)

Question 22

Primary 4 Science » Primary 4 Science (Term 2)

2 pts

John pumped 100 cm^3 of air into an 800 cm^3 jar that had 300 cm^3 of water in it as shown in the diagram.



What is the volume of air in the jar now?

- A) 100 cm^3
- ✓ B) 500 cm^3
- C) 600 cm^3
- D) 800 cm^3

Question Type: Multiple Choice
Randomize Answers: No
Date Added: Wed 16th Sep 2020
Last Modified: N/A
QID#: 23,697,767

[Answers](#) | [Edit](#) | [Duplicate](#) | [Used In](#) | [Reorder](#)

[Remove From Test](#)

Question 23

Primary 4 Science » Primary 4 Science (Term 2)

2 pts

Which of the following is a source of light?

- ✓ A) sun
- B) moon
- C) mirror
- D) aluminium sheet

Question Type: Multiple Choice
Randomize Answers: No
Date Added: Wed 16th Sep 2020
Last Modified: N/A
QID#: 23,697,778

[Answers](#) | [Edit](#) | [Duplicate](#) | [Used In](#) | [Reorder](#)

[Remove From Test](#)

Question 24

Primary 4 Science » Primary 4 Science (Term 2)

2 pts

James has an object that allows some light to pass through and another object that does not allow light to pass through. Which objects does he have?

- A) Wood and clear plastic

- B) Clear glass and magnet
- ✓ C) Tracing paper and cardboard
- D) Frosted glass and tracing paper

Question Type: Multiple Choice
Randomize Answers: No
Date Added: Wed 16th Sep 2020
Last Modified: N/A
QID#: 23,697,798

[Answers](#) |
 [Edit](#) |
 [Duplicate](#) |
 [Used In](#) |
 [Reorder](#)

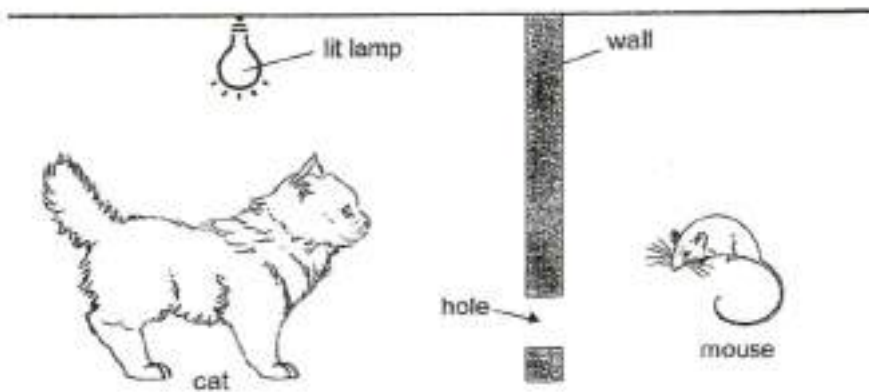
[Remove From Test](#)

Question 25

Primary 4 Science » Primary 4 Science (Term 2)

2 pts

A cat ran after a mouse. The mouse ran into a hole in a wall. The cat stopped in front of the wall as it was unable to see the mouse.



Which of the following is a correct explanation of why the cat could not see the mouse?

- A) The mouse is not able to reflect light
- B) The wall allows light to pass through
- ✓ C) The light of the lamp travels in a straight line
- D) The holes does not allow light to pass through

Question Type: Multiple Choice
Randomize Answers: No
Date Added: Wed 16th Sep 2020
Last Modified: N/A
QID#: 23,697,817

[Answers](#) |
 [Edit](#) |
 [Duplicate](#) |
 [Used In](#) |
 [Reorder](#)

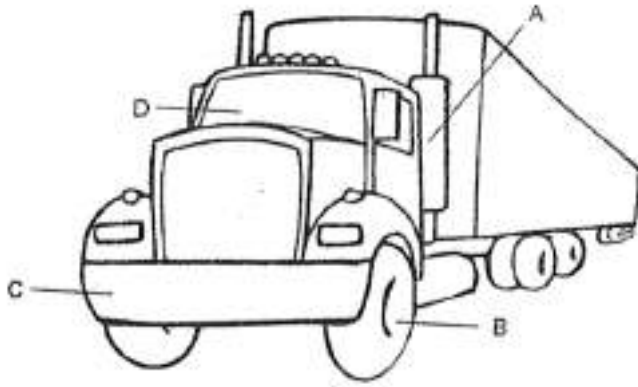
[Remove From Test](#)

Question 26

Primary 4 Science » Primary 4 Science (Term 2)

2 pts

The diagram below shows a truck on the road.



Which part, A, B, C or D, of the truck must be made of a transparent material?

- A) A
- B) B
- C) C
- ✓ D) D

Question Type: Multiple Choice
Randomize Answers: No
Date Added: Wed 16th Sep 2020
Last Modified: N/A
QID#: 23,697,827

[Answers](#) | [Edit](#) | [Duplicate](#) | [Used In](#) | [Reorder](#)

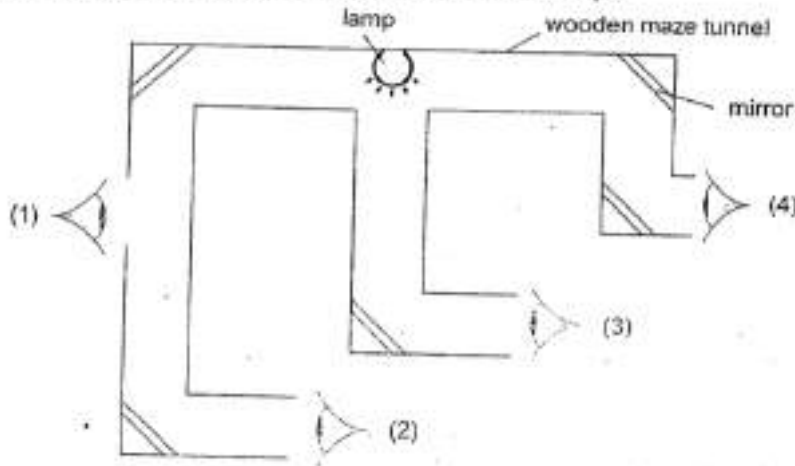
[Remove From Test](#)

Question 27

Primary 4 Science » Primary 4 Science (Term 2)

2 pts

Four boys are peering into a wooden maze tunnel that has five pieces of mirrors as shown below. Which boy cannot see the lit lamp?



- ✓ A) 1
- B) 2
- C) 3
- D) 4

Question Type: Multiple Choice
Randomize Answers: No
Date Added: Wed 16th Sep 2020
Last Modified: N/A
QID#: 23,697,838

[Answers](#) | [Edit](#) | [Duplicate](#) | [Used In](#) | [Reorder](#)

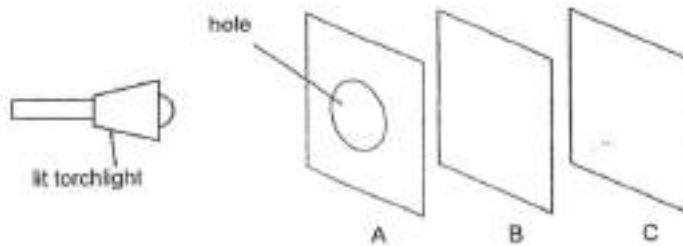
[Remove From Test](#)

Question 28

Primary 4 Science » Primary 4 Science (Term 2)

2 pts

Fred carried out an experiment in a dark room. Sheets, A, B and C, are arranged in a straight line as shown in the diagram below.



Fred observed a bright circular patch of light on B only. Which of the following is definitely true?

- A) A is made of clear plastic
- B) B allows light to pass through
- C) C does not allow light to pass through
- ✓ D) A and B do not allow light to pass through

Question Type: Multiple Choice
Randomize Answers: No
Date Added: Wed 16th Sep 2020
Last Modified: N/A
QID#: 23,697,857

[Answers](#) | [Edit](#) | [Duplicate](#) | [Used In](#) | [Reorder](#)

[Remove From Test](#)

Question 29

Primary 4 Science » Primary 4 Science (Term 2)

0 pts

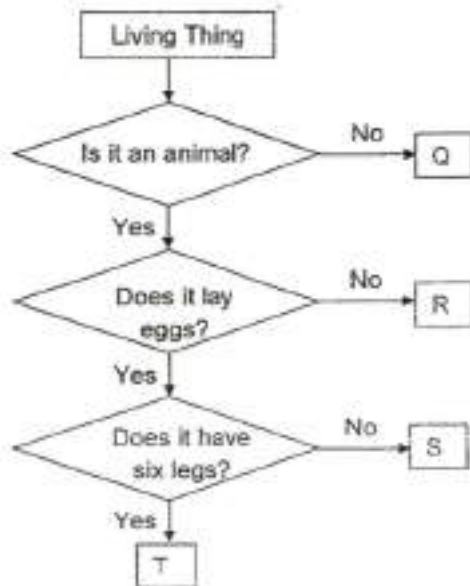
Booklet B

This section is designed for extended answers that parent/ teacher will have to assign and guide child to attempt after the test has been completed.

Grading: This question type is not graded on this system and will not affect the final score as it

was designed in such a way that it requires manual assistance.

Study the flowchart below carefully. Q, R, S and T are living things.



(a) Based on the flowchart above, state one difference between R and S. [1]

(b) Based on the flow chart above, state one similarity in the characteristics of S and T. [1]

(c) Can Q be a plastic ball? Explain why. [1]

Question Type: Essay
 Date Added: Wed 16th Sep 2020
 Last Modified: N/A
 QID#: 23,697,932

Correctly answered feedback

A) Living thing R does not lay eggs but living thing S lays eggs.

B) Both living things S and T lay eggs.

C) No, Q cannot be a plastic ball. A plastic ball is not a living thing.

Incorrectly answered feedback

A) Living thing R does not lay eggs but living thing S lays eggs.

B) Both living things S and T lay eggs.

C) No, Q cannot be a plastic ball. A plastic ball is not a living thing.

[Answers](#) | [Edit](#) | [Duplicate](#) | [Used In](#) | [Reorder](#)

[Remove From Test](#)

Question 30

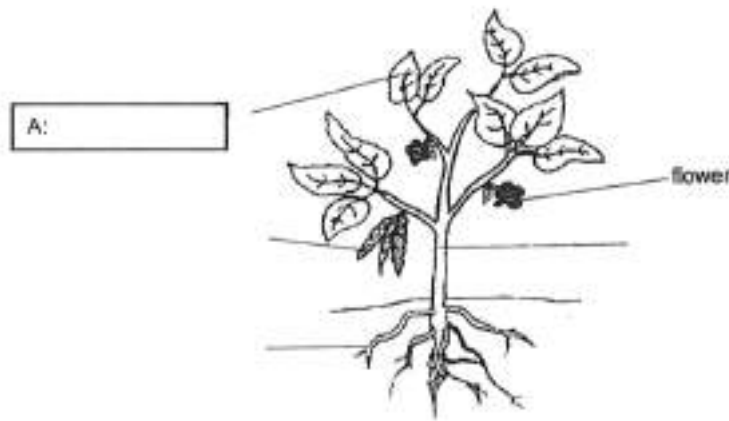
Primary 4 Science » Primary 4 Science (Term 2)

0.5 pts

The diagram below shows a plant and its parts.

(a) Name the plant parts, A, B, C and D, in the boxes below.

[2]



Accepted answers:

✓ leaf

Question Type: Free Text
 Date Added: Wed 16th Sep 2020
 Last Modified: Mon 21st Sep 2020
 QID#: 23,697,986

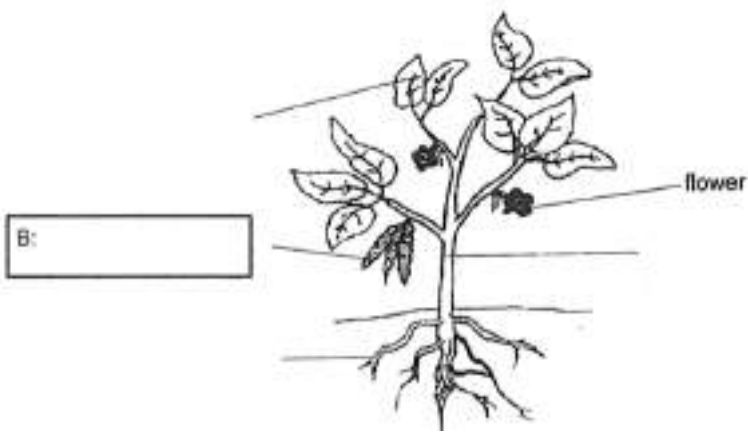
[Answers](#) | [Edit](#) | [Duplicate](#) | [Used In](#) | [Reorder](#)

[Remove From Test](#)

Question 31

Primary 4 Science » Primary 4 Science (Term 2)

0.5 pts

**Accepted answers:**

✓ fruit

Question Type: Free Text
Date Added: Wed 16th Sep 2020
Last Modified: N/A
QID#: 23,697,994

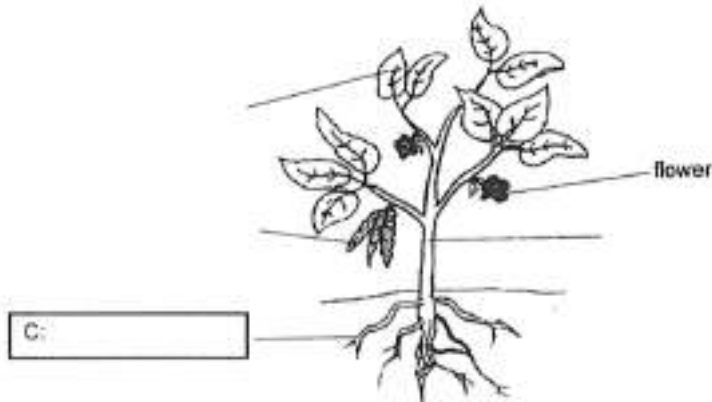
[Answers](#) | [Edit](#) | [Duplicate](#) | [Used In](#) | [Reorder](#)

[Remove From Test](#)

Question 32

Primary 4 Science » Primary 4 Science (Term 2)

0.5 pts

**Accepted answers:**

✓ Root

✓ roots

Question Type: Free Text
Date Added: Wed 16th Sep 2020
Last Modified: Mon 21st Sep 2020
QID#: 23,697,997

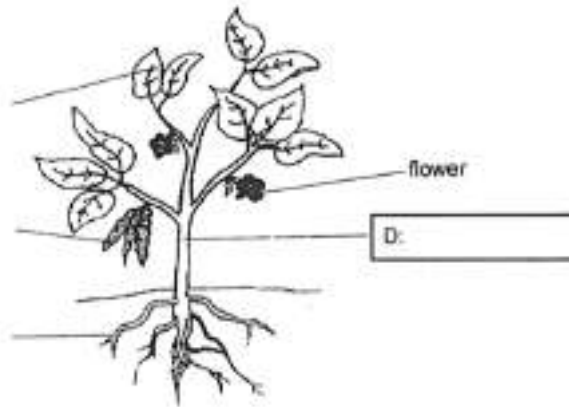
[Answers](#) | [Edit](#) | [Duplicate](#) | [Used In](#) | [Reorder](#)

[Remove From Test](#)

Question 33

Primary 4 Science » Primary 4 Science (Term 2)

0.5 pts

**Accepted answers:**

✓ stem

Question Type: Free Text
Date Added: Wed 16th Sep 2020
Last Modified: N/A
QID#: 23,698,017

[Answers](#) | [Edit](#) | [Duplicate](#) | [Used In](#) | [Reorder](#)

[Remove From Test](#)

Question 34

Primary 4 Science » Primary 4 Science (Term 2)

0 pts

State a function of plant part C

Question Type: Essay
Date Added: Wed 16th Sep 2020
Last Modified: N/A
QID#: 23,698,037

Correctly answered feedback

Plant part C helps to absorb water and mineral salts from the ground

Incorrectly answered feedback

Plant part C helps to absorb water and mineral salts from the ground

[Answers](#) | [Edit](#) | [Duplicate](#) | [Used In](#) | [Reorder](#)

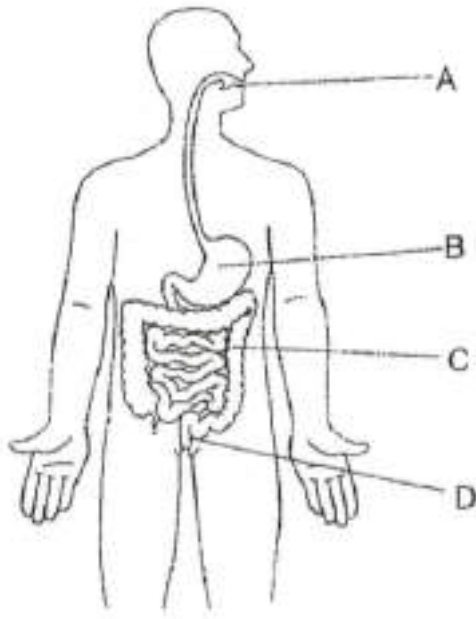
[Remove From Test](#)

Question 35

Primary 4 Science » Primary 4 Science (Term 2)

1 pt

The diagram below shows the human digestive system



State the part where digestion begins. Part ____

- ✓ A) A
- B) B
- C) C
- D) D

Question Type: Multiple Choice
Randomize Answers: No
Date Added: Wed 16th Sep 2020
Last Modified: N/A
QID#: 23,698,064

[Answers](#) | [Edit](#) | [Duplicate](#) | [Used In](#) | [Reorder](#)

[Remove From Test](#)

Question 36

Primary 4 Science » Primary 4 Science (Term 2)

0 pts

Explain how biting and chewing of food by the teeth affects the amount of food digested in the mouth

Question Type: Essay
Date Added: Wed 16th Sep 2020
Last Modified: N/A
QID#: 23,698,084

Correctly answered feedback

The more biting and chewing, the food will be cut into smaller pieces to be digested by the saliva in the mouth

Incorrectly answered feedback

The more biting and chewing, the food will be cut into smaller pieces to be digested by the saliva in the mouth

[Answers](#) |
 [Edit](#) |
 [Duplicate](#) |
 [Used In](#) |
 [Reorder](#)

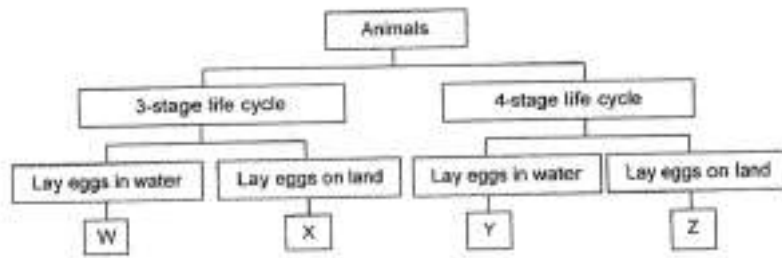
[Remove From Test](#)

Question 37

Primary 4 Science » Primary 4 Science (Term 2)

0 pts

Study the classification chart below



State one similarity in the life cycle of Animal X and the life cycle of a cat

Question Type: Essay
Date Added: Wed 16th Sep 2020
Last Modified: N/A
QID#: 23,698,104

Correctly answered feedback

Both animal X and the cat has an egg stage in their life cycle

Incorrectly answered feedback

Both animal X and the cat has an egg stage in their life cycle

[Answers](#) |
 [Edit](#) |
 [Duplicate](#) |
 [Used In](#) |
 [Reorder](#)

[Remove From Test](#)

Question 38

Primary 4 Science » Primary 4 Science (Term 2)

0.5 pts

Which of the letters W, X, Y, Z, represents the following animals?

A butterfly: _____

- A) W
- B) X
- C) Y
- ✓ D) Z

Question Type: Multiple Choice
Randomize Answers: No
Date Added: Wed 16th Sep 2020
Last Modified: N/A
QID#: 23,698,121

[Answers](#) |
 [Edit](#) |
 [Duplicate](#) |
 [Used In](#) |
 [Reorder](#)

[Remove From Test](#)

Question 39

Primary 4 Science » Primary 4 Science (Term 2)

0.5 pts

A frog: _____

- ✓ A) W
- B) X
- C) Y
- D) Z

Question Type: Multiple Choice
Randomize Answers: No
Date Added: Wed 16th Sep 2020
Last Modified: N/A
QID#: 23,698,131

[Answers](#) | [Edit](#) | [Duplicate](#) | [Used In](#) | [Reorder](#)

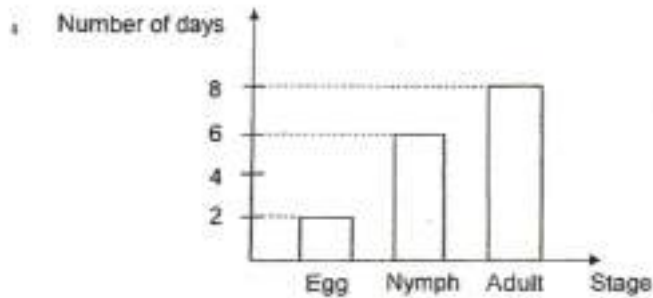
[Remove From Test](#)

Question 40

Primary 4 Science » Primary 4 Science (Term 2)

1 pt

An unknown insect has 3 stages in its life cycle. The graph below shows the duration of each stage.



At which of the above stages is the insect able to reproduce?

- A) Egg
- B) Nymph
- ✓ C) Adult

Question Type: Multiple Choice
Randomize Answers: No
Date Added: Wed 16th Sep 2020
Last Modified: N/A
QID#: 23,698,164

[Answers](#) | [Edit](#) | [Duplicate](#) | [Used In](#) | [Reorder](#)

[Remove From Test](#)

Question 41

Primary 4 Science » Primary 4 Science (Term 2)

1 pt

Based on the graph shown above, how long would it take for an egg to become an adult after it has been laid?

Accepted answers:

- ✓ 8 days
- ✓ 8days
- ✓ It would take 8 days

- ✓ 8
- ✓ eight days
- ✓ eight
- ✓ It would take 8 days.
- ✓ It would take eight days.
- ✓ It would take eight days

Question Type: Free Text
Date Added: Wed 16th Sep 2020
Last Modified: Mon 21st Sep 2020
QID#: 23,698,186

[Answers](#) | [Edit](#) | [Duplicate](#) | [Used In](#) | [Reorder](#)

[Remove From Test](#)

Question 42

Primary 4 Science » Primary 4 Science (Term 2)

1 pt

Based on the graph above, how long does it take for the insect to complete one life cycle.

Accepted answers:

- ✓ 16 days
- ✓ 16days
- ✓ It would take 16 days
- ✓ 16
- ✓ It would take 16 days.

Question Type: Free Text
Date Added: Wed 16th Sep 2020
Last Modified: Mon 21st Sep 2020
QID#: 23,698,200

[Answers](#) | [Edit](#) | [Duplicate](#) | [Used In](#) | [Reorder](#)

[Remove From Test](#)

Question 43

Primary 4 Science » Primary 4 Science (Term 2)

0 pts

If the above insect is a cockroach, give a difference between the characteristic of its nymph and its adult.

Question Type: Essay
Date Added: Wed 16th Sep 2020
Last Modified: N/A
QID#: 23,698,209

Correctly answered feedback

The cockroach has wings but its nymph does not have wings

Incorrectly answered feedback

The cockroach has wings but its nymph does not have wings

Question 44

Primary 4 Science » Primary 4 Science (Term 2)

0 pts

Eric placed similar seeds, J, K, L, M and N in a room. They are given different conditions and the results of his experiment are shown below.

Seeds	Conditions			
	Given water daily	Exposed to light	Given Substance X	Seed grew into seedling (Germination)
J	Yes	Yes	Yes	Yes
K	No	Yes	Yes	No
L	Yes	Yes	No	Yes
M	No	No	Yes	No
N	Yes	No	No	Yes

- (a) Based on the above results, which condition(s) stated in the table is/are necessary for the seed to germinate? [1]

- (b) What can Eric conclude about the presence of Substance X and light on the germination of a seed? [1]

- (c) Eric's teacher suggested that Eric repeats his experiment three more times. How will doing this help in the results of Eric's experiments? [1]

Question Type: Essay
 Date Added: Wed 16th Sep 2020
 Last Modified: N/A
 QID#: 23,698,236

Correctly answered feedback

- A) Water is necessary for the seed to germinate.**
- B) Eric can conclude that the presence of substance X and light are not needed for germination.**
- C) It will increase the reliability of the results of Eric's experiments.**

Incorrectly answered feedback

- A) Water is necessary for the seed to germinate.**
- B) Eric can conclude that the presence of substance X and light are not needed for germination.**
- C) It will increase the reliability of the results of Eric's experiments.**

[Answers](#) | [Edit](#) | [Duplicate](#) | [Used In](#) | [Reorder](#)

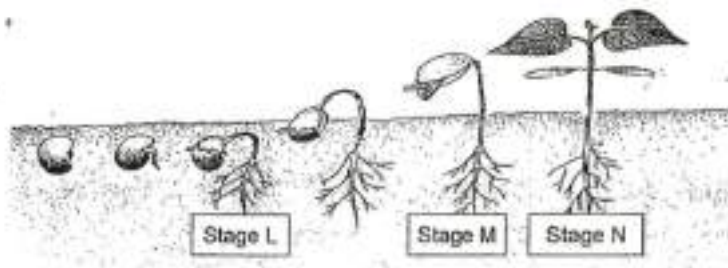
[Remove From Test](#)

Question 45

Primary 4 Science » Primary 4 Science (Term 2)

0 pts

The diagram below shows some of the stages in the life cycle of a plant.



- (a) At which stage, L, M or N, does the plant make its own food? Explain. [1]

- (b) How can you tell if a plant has grown into an adult plant? [1]

Question Type: Essay
 Date Added: Wed 16th Sep 2020
 Last Modified: N/A
 QID#: 23,698,253

Correctly answered feedback

- A) Stage N. The leaves can trap sunlight.**
- B) The plant has flowers/fruits.**

Incorrectly answered feedback

A) Stage N. The leaves can trap sunlight.

B) The plant has flowers/fruits.

[Answers](#) | [Edit](#) | [Duplicate](#) | [Used In](#) | [Reorder](#)

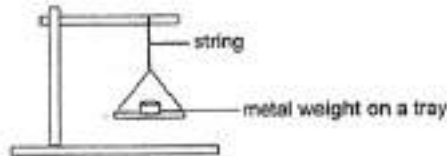
[Remove From Test](#)

Question 46

Primary 4 Science » Primary 4 Science (Term 2)

0 pts

Sam set up an experiment to find out how the thickness of a string would affect the strength of the string.



He used 3 strings, A, B and C. He added weights on the tray until the string broke. The table below shows the number of weights that each string could hold before it broke.

String	Thickness of string (unit)	Number of weights that each string could hold before it broke
A	1	5
B	2	10
C	3	15

(a) Which string, A, B or C is the strongest? Explain your answer. [2]

Question Type: Essay
Date Added: Wed 16th Sep 2020
Last Modified: N/A
QID#: 23,698,263

Correctly answered feedback

String C. String C could hold the most number of weights before it broke.

Incorrectly answered feedback

String C. String C could hold the most number of weights before it broke.

[Answers](#) | [Edit](#) | [Duplicate](#) | [Used In](#) | [Reorder](#)

[Remove From Test](#)

Question 47

Primary 4 Science » Primary 4 Science (Term 2)

1 pt

Select the constant variable(s) to ensure a fair test in the experiment

- ✓ A) Length of string
- ✓ B) Material of string
- C) thickness of string
- ✓ D) Mass of weights

Question Type: Multiple Response
Randomize Answers: No
Grade style: Full points if all answers are correct
Date Added: Wed 16th Sep 2020
Last Modified: N/A
QID#: 23,698,280

[Answers](#) | [Edit](#) | [Duplicate](#) | [Used In](#) | [Reorder](#)

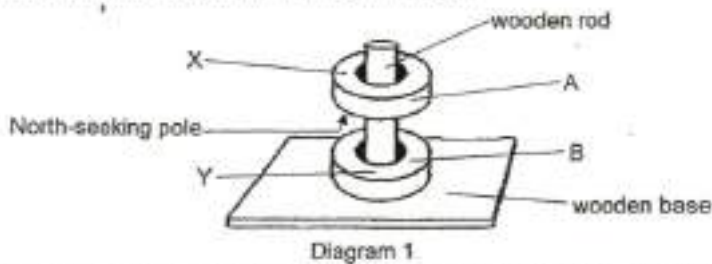
[Remove From Test](#)

Question 48

Primary 4 Science » Primary 4 Science (Term 2)

0 pts

Beth placed two identical ring magnets, A and B, through a wooden rod on a wooden base. She observed that the magnets, A and B, were at a distance away from each other as shown in the diagram below.



(a) Explain why the magnets, A and B, were at a distance away from each other. [1]

Question Type: Essay
Date Added: Wed 16th Sep 2020
Last Modified: N/A
QID#: 23,698,293

Correctly answered feedback

Magnet A and B had their like poles facing each other and they repelled each other

Incorrectly answered feedback

Magnet A and B had their like poles facing each other and they repelled each other

[Answers](#) | [Edit](#) | [Duplicate](#) | [Used In](#) | [Reorder](#)

[Remove From Test](#)

Question 49

Primary 4 Science » Primary 4 Science (Term 2)

0.5 pts

The north-seeking pole of the magnet, A, is shown. Identify the magnetic poles of the surfaces, X and Y

X:

Accepted answers:

- ✓ South-seeking pole
- ✓ South - seeking pole

Question Type: Free Text

Date Added: Wed 16th Sep 2020
 Last Modified: Mon 21st Sep 2020
 QID#: 23,698,310

[Answers](#) | [Edit](#) | [Duplicate](#) | [Used In](#) | [Reorder](#)

[Remove From Test](#)

Question 50

Primary 4 Science » Primary 4 Science (Term 2)

0.5 pts

Y: _____

Accepted answers:

- ✓ north-seeking pole
- ✓ north - seeking pole

Question Type: Free Text
 Date Added: Wed 16th Sep 2020
 Last Modified: N/A
 QID#: 23,698,319

[Answers](#) | [Edit](#) | [Duplicate](#) | [Used In](#) | [Reorder](#)

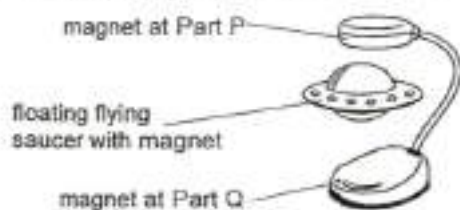
[Remove From Test](#)

Question 51

Primary 4 Science » Primary 4 Science (Term 2)

0 pts

Beth has a toy flying saucer as shown below.



(c) Explain why the flying saucer is floating. [2]

Question Type: Essay
 Date Added: Wed 16th Sep 2020
 Last Modified: N/A
 QID#: 23,698,341

Correctly answered feedback

The like poles of Part P and the magnet in the floating flying saucer are facing each other. The like poles of the magnet at Part Q and the magnet in the flyer saucer are facing each other so those magnets are repelling each other.

Incorrectly answered feedback

The like poles of Part P and the magnet in the floating flying saucer are facing each other. The like poles of the magnet at Part Q and the magnet in the flyer saucer are facing each other so those magnets are repelling each other.

[Answers](#) | [Edit](#) | [Duplicate](#) | [Used In](#) | [Reorder](#)

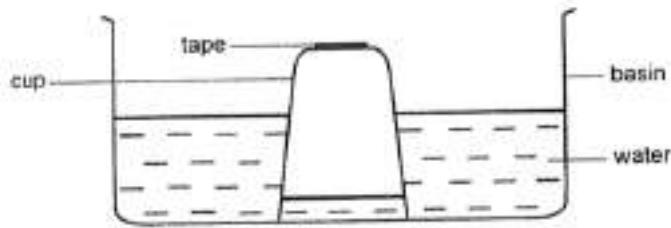
[Remove From Test](#)

Question 52

Primary 4 Science » Primary 4 Science (Term 2)

0 pts

Abdul made a hole at the base of a plastic cup and then sealed it with tape. When he pushed the inverted cup into the basin of water, only a small amount of water entered the cup.



(a) Explain why a small amount of water entered the cup? [1]

(b) Give a reason why the water level in the cup does not move any higher. [1]

(c) Describe what would happen to the water level in the cup if Abdul removed the tape from the cup. [1]

(d) Give an explanation for your answer in (c). [1]

Question Type: Essay
Date Added: Wed 16th Sep 2020
Last Modified: N/A
QID#: 23,698,366

Correctly answered feedback

A) Air in the cup occupies space but air can be compressed slightly so when it was pushed into the basin of water, only a small amount of water entered the cup.

B) The hole on the base of the plastic cup was sealed, it prevented air from escaping so the water cannot occupy the space that was previously occupied by air.

C) The water level in the cup will rise until it is the same as the water level in the basin.

D) The air in the cup escaped from the hole allowing water to occupy the space that was previously occupied by the air.

Incorrectly answered feedback

A) Air in the cup occupies space but air can be compressed slightly so when it was pushed into the basin of water, only a small amount of water entered the cup.

B) The hole on the base of the plastic cup was sealed, it prevented air from escaping so the water cannot occupy the space that was previously occupied by air.

C) The water level in the cup will rise until it is the same as the water level in the basin.

D) The air in the cup escaped from the hole allowing water to occupy the space that was previously occupied by the air.

[Answers](#) | [Edit](#) | [Duplicate](#) | [Used In](#) | [Reorder](#)

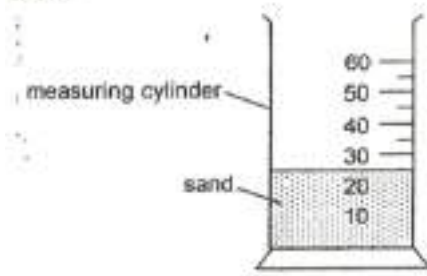
[Remove From Test](#)

Question 53

Primary 4 Science » Primary 4 Science (Term 2)

1 pt

James filled a measuring cylinder with 25 cm^3 of sand as shown in the diagram below.



He then poured 35 cm^3 of water into the same measuring cylinder.

(a) What would be the total volume of sand and water shown on the measuring scale of the cylinder? Tick your answer in the table below. [1]

- A) More than 60 cm^3
- B) At 60 cm^3
- ✓ C) Between 60 cm^3 and 25 cm^3
- D) Below 25 cm^3

Question Type: Multiple Choice
Randomize Answers: No
Date Added: Wed 16th Sep 2020
Last Modified: N/A
QID#: 23,698,446

[Answers](#) | [Edit](#) | [Duplicate](#) | [Used In](#) | [Reorder](#)

[Remove From Test](#)

Question 54

Primary 4 Science » Primary 4 Science (Term 2)

0 pts

Explain your choice.

Question Type: Essay
Date Added: Wed 16th Sep 2020
Last Modified: N/A
QID#: 23,698,454

Correctly answered feedback

The water occupied the space between the sand which was previously occupied by air.

Incorrectly answered feedback

The water occupied the space between the sand which was previously occupied by air.

[Answers](#) | [Edit](#) | [Duplicate](#) | [Used In](#) | [Reorder](#)

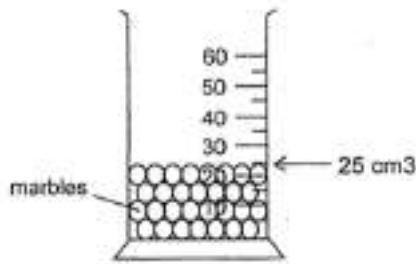
[Remove From Test](#)

Question 55

Primary 4 Science » Primary 4 Science (Term 2)

0 pts

(c) James repeated the experiment but used marbles instead of sand.



After pouring the 35 cm^3 of water into the cylinder, will the water level be higher or lower than in (a)? Explain why. [1]

Question Type: Essay
 Date Added: Wed 16th Sep 2020
 Last Modified: N/A
 QID#: 23,698,467

Correctly answered feedback

C) The water level will be lower than in (a). The air space/gap between the marbles were bigger than in (a) and the water could occupy the space which was occupied by the air.

Incorrectly answered feedback

C) The water level will be lower than in (a). The air space/gap between the marbles were bigger than in (a) and the water could occupy the space which was occupied by the air.

[Answers](#) | [Edit](#) | [Duplicate](#) | [Used In](#) | [Reorder](#)

[Remove From Test](#)

Question 56

Primary 4 Science » Primary 4 Science (Term 2)

1 pt

The table below shows the properties of A, B, C and D.

Properties	A	B	C	D
Does it have mass?	Yes	No	Yes	Yes
Can it be seen?	No	No	Yes	Yes
Does it have a definite shape?	No	No	Yes	No
Does it have definite volume?	No	No	Yes	Yes

(a) Which of the above, A, B, C or D, can represent music? [1]

- A) A
- ✓ B) B
- C) C
- D) D

Question Type: Multiple Choice
Randomize Answers: No
Date Added: Wed 16th Sep 2020
Last Modified: N/A
QID#: 23,698,479

[Answers](#) | [Edit](#) | [Duplicate](#) | [Used In](#) | [Reorder](#)

[Remove From Test](#)

Question 57

Primary 4 Science » Primary 4 Science (Term 2)

1 pt

If D is matter, what state of matter is it?

Accepted answers:

- ✓ Liquid

Question Type: Free Text
Date Added: Wed 16th Sep 2020
Last Modified: Mon 21st Sep 2020
QID#: 23,698,493

[Answers](#) | [Edit](#) | [Duplicate](#) | [Used In](#) | [Reorder](#)

[Remove From Test](#)

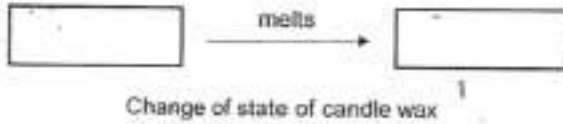
Question 58

Primary 4 Science » Primary 4 Science (Term 2)

1 pt



(c) When the above candle is lit, the wax melts. State "solid", "liquid" or "gas" for the change of state of the wax as it melts in the boxes below. [1]



_____ melts _____

Accepted answers:

- ✓ solid melts liquid
- ✓ solid,liquid
- ✓ solid, liquid
- ✓ solid , liquid
- ✓ solid liquid

Question Type: Free Text

Date Added: Wed 16th Sep 2020

Last Modified: N/A

QID#: 23,698,520

[Answers](#) | [Edit](#) | [Duplicate](#) | [Used In](#) | [Reorder](#)

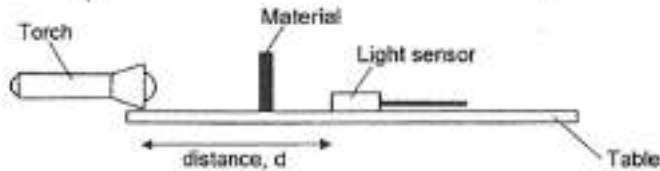
[Remove From Test](#)

Question 59

Primary 4 Science » Primary 4 Science (Term 2)

0 pts

An experiment was conducted to find out the amount of light that would pass through 4 different materials, P, Q, R and S. A light sensor was used to detect how much light passes through each material. The setup for the experiment is shown below.



When no material was placed between the torch and light sensor, the amount of light detected was 500 units.

The following table shows the results when different materials were placed between the torch and light sensor.

Material	Amount of light detected (units)
P	470
Q	390
R	180
S	0

(a) Based on the table above, which of the materials, P, Q, R or S, will be most suitable to make part Y of the spectacles below which is used for reading? Give a reason for your answer. [2]



Question Type: Essay
 Date Added: Wed 16th Sep 2020
 Last Modified: N/A
 QID#: 23,698,536

Correctly answered feedback

A) Material P. Material P allows most light to pass through so that the person wearing it can see the words in a book clearly and will be able to read properly.

Incorrectly answered feedback

A) Material P. Material P allows most light to pass through so that the person wearing it can see the words in a book clearly and will be able to read properly.

Question 60

Primary 4 Science » Primary 4 Science (Term 2)

0 pts

Without changing any of the apparatus or equipment used, suggest how you can increase the readings on the light sensor for all the materials?

Question Type: Essay
Date Added: Wed 16th Sep 2020
Last Modified: N/A
QID#: 23,698,555

Correctly answered feedback

Move the torch and light sensor closer to the material

Incorrectly answered feedback

Move the torch and light sensor closer to the material

[Answers](#) | [Edit](#) | [Duplicate](#) | [Used In](#) | [Reorder](#)

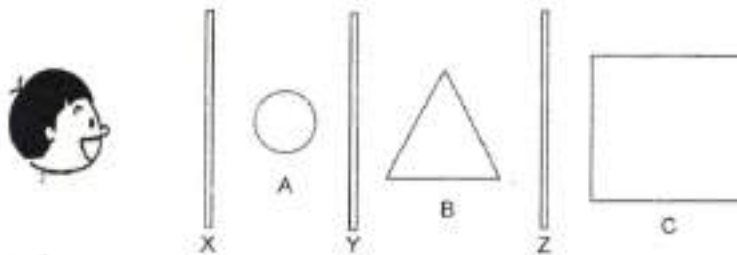
[Remove From Test](#)

Question 61

Primary 4 Science » Primary 4 Science (Term 2)

1 pt

A boy looked across the room at objects, A, B and C, and three pieces of glass, X, Y and Z. They were arranged in a row as shown below.



Screen	Property
X	Allow most light to pass through
Y	Allow some light to pass through
Z	Does not allow light to pass through

Which of the objects A, B or C can the boy see?

- ✓ A) A
 ✓ B) B
 C) C

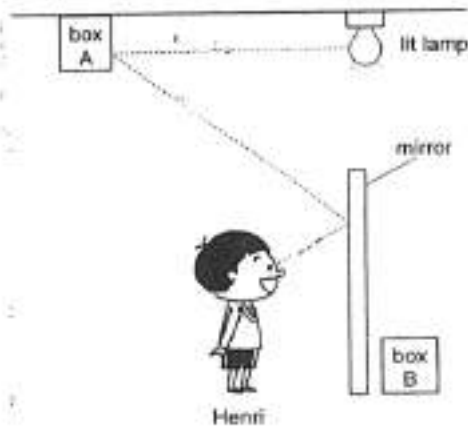
Question Type: Multiple Response
Randomize Answers: No
Grade style: Full points if all answers are correct
Date Added: Wed 16th Sep 2020
Last Modified: N/A
QID#: 23,698,575

[Answers](#) | [Edit](#) | [Duplicate](#) | [Used In](#) | [Reorder](#)

[Remove From Test](#)

Question 62

Henri set up an experiment as shown in the diagram below.

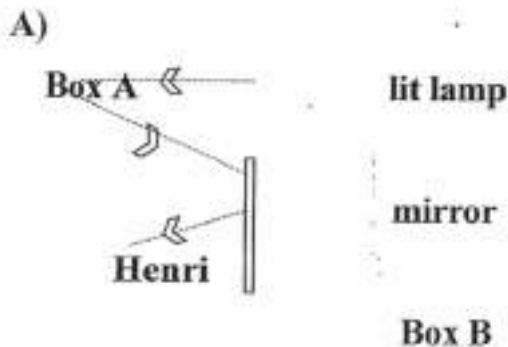


When Henri faces the mirror, he is able to see box A clearly behind him but not box B. The path of light shown in the above diagram as dotted lines allows Henri to see box A.

- (a) Draw in the arrows on the dotted line in the above diagram to show the direction of the path of light. [1]
- (b) With the help of the diagram, explain how Henri is able to see box A even though it is behind him. [2]

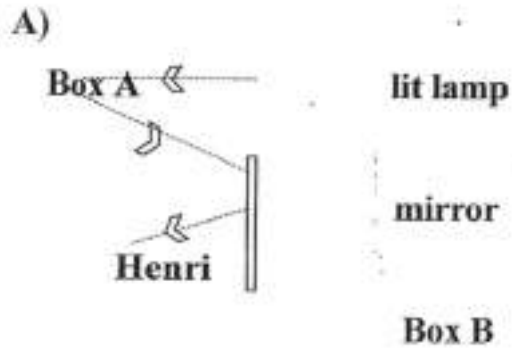
Question Type: Essay
 Date Added: Wed 16th Sep 2020
 Last Modified: N/A
 QID#: 23,698,604

Correctly answered feedback



B) The light from the lit lamp reflects on Box A, bounces off the mirror and enters Henri's eyes. Therefore, he is able to see Box A even though it is behind him.

Incorrectly answered feedback



B) The light from the lit lamp reflects on Box A, bounces off the mirror and enters Henri's eyes. Therefore, he is able to see Box A even though it is behind him.

[Answers](#) | [Edit](#) | [Duplicate](#) | [Used In](#) | [Reorder](#)

[Remove From Test](#)